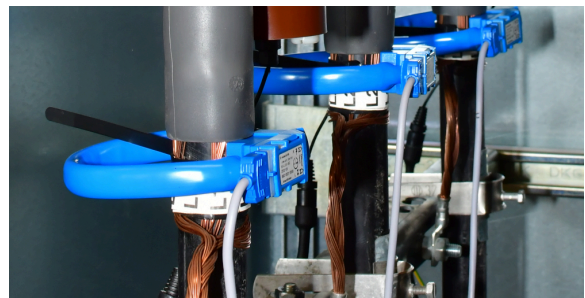
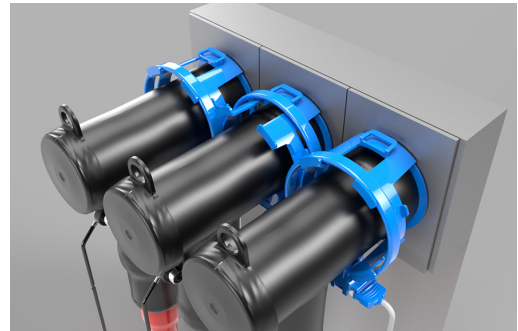


IKI-Split-Core Transducer: IKI-LUM 92 mm, 1%

Directional Split-Core Transducer for C-Cone Bushing

IKI current transformers are specially designed for use with IKI fault indicators, IKI grid-controllers and IKI transformer protection devices. IKI current transformers are designed for maximum current ranges. They are easy to mount and can be quickly connected to the IKI devices via suitable connection cables.



Features

- Pluggable connection cable for easy mounting
- Marking of the load flow direction
- Easy opening and closing due to push lock
- Fixation on the cable with cable tie
- Can be used on C-cone bushings together with bushing sleeves

This current transformer has a higher accuracy. In conjunction with the IKI-50_1F R2, precise measured value acquisition is possible.

IKI-Split-Core Transducer: IKI-LUM 92 mm, 1%

Directional Split-Core Transducer for C-Cone Bushing

Versions

Item number	Description
2512106_H001_S001	IKI-LUM_d92 1% split-core CT with cable tie (set)
2512106_H003_S001	IKI-LUM_d92 1% CT for bushings with C-cone (set)
2512106_H004_S001	IKI-LUM_d92 1% CT for bushings (set) for SIEMENS switchgears

Technical Data

General data

Article number	2512106_H003_S001
Quantity unit	Set with 3 pieces
Product designation	IKI-LUM_d92 1% CT for bushings with C-cone (set)
Usable with	IKI-50_1F R2

Operating conditions

Protection class	IP54
Class accuracy	Class 1 (in conjunction with IKI-50_1F R2)
Applicable at nominal frequency	50 Hz, 60 Hz
Inner diameter	92 mm
Transmission ratio	2000 / 1
Load power	0.2 VA @ 600 A
Thermal maximum current	27 kA
Note on thermal maximum current	Value applies with connected IKI-50_1F R2
Maximum continuous thermal current	650 A
Insulation voltage transformer	3 kV
Directional current sensing	✓
Installation location	Screened cables, Bushing of SF6-Switchgear



Kries Energietechnik GmbH & Co. KG

Sandwiesenstr. 19 | D-71334 Waiblingen

kries.com | sales.kries@te.com | (+)49-7151-7074-860

22.08.24

Page 2/4

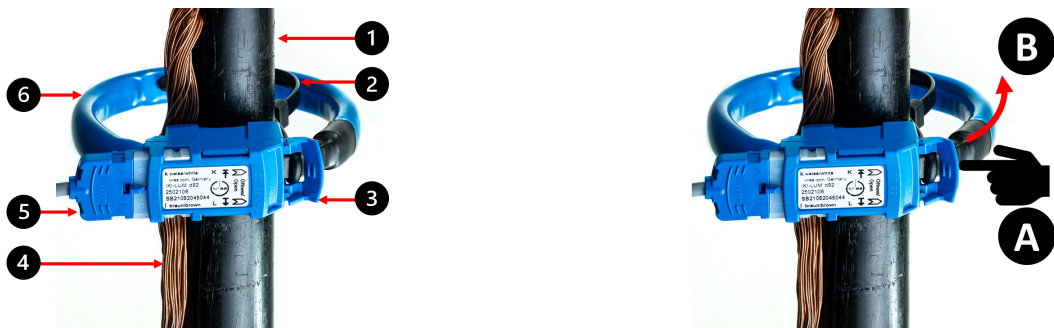
IKI-Split-Core Transducer: IKI-LUM 92 mm, 1%

Directional Split-Core Transducer for C-Cone Bushing

Connecting Cables

Article number	Product designation
3503118_S	Connecting cable set pluggable Length = 3,0m
3503135_S	Connecting cable set pluggable Length = 5,0m
3503135_S999	Connecting cable set pluggable Lengths on request

Figures



Explanations to the figures:

- (1) Cable
- (2) Cable tie
- (3) Tab to open CTs
- (4) Shield return
- (5) Connector socket for connecting cable
- (6) Divisible CTs core

Assembly:

- To open transducer core, press tab in marked direction with thumb (A) and pull core out of housing (B). Fasten CTs to cable with cable tie, close transducer core until bead engages tab.
- Orientation: "K (P1)" in direction of busbar, "L (P2)" in direction of cable
- Note shield return through current transformer.

Safety instructions:



Kries Energietechnik GmbH & Co. KG

Sandwiesenstr. 19 | D-71334 Waiblingen

kries.com | sales.kries@te.com | (+)49-7151-7074-860

© Kries Energietechnik GmbH & Co. KG | Subject to modifications.

22.08.24

Page 3/4

IKI-Split-Core Transducer: IKI-LUM 92 mm, 1%

Directional Split-Core Transducer for C-Cone Bushing

- During installation, the five safety rules must be observed.
- The current transformers may only be placed on shielded, touch-proof cables!
- The current transformers must not be operated in open condition.
- Damaged current transformers must not be used.
- The cable shield must be fed back through the current transformers in an insulated manner for proper function.
- Please refer to the operating instructions of the respective device for further details.

Figures may differ from the product.



Kries Energietechnik GmbH & Co. KG

Sandwiesenstr. 19 | D-71334 Waiblingen

kries.com | sales.kries@te.com | (+)49-7151-7074-860

22.08.24

Page 4/4

© Kries Energietechnik GmbH & Co. KG | Subject to modifications.