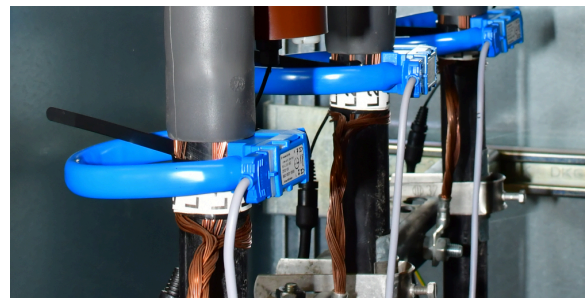
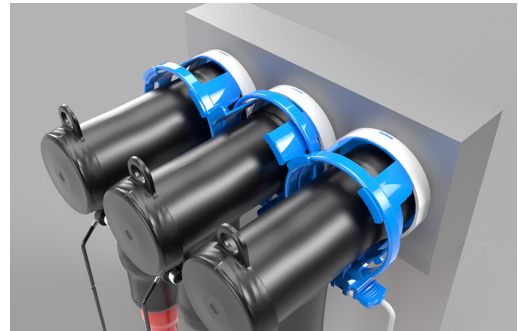


# IKI-Split-Core Transducer: IKI-LUM 92 mm

## Directional Split-Core Transducer for SIEMENS-Bushing

IKI current transformers are specially designed for use with IKI fault indicators, IKI grid-controllers and IKI transformer protection devices. IKI current transformers are designed for maximum current ranges. They are easy to mount and can be quickly connected to the IKI devices via suitable connection cables.



### Features

- Pluggable connection cable for easy mounting
- Marking of the load flow direction
- Easy opening and closing due to push lock
- Fixation on the cable with cable tie
- Can be used on C-cone bushings together with bushing sleeves

### Versions

Item number	Description
2512106_H001	IKI-LUM_d92 Split-Core Transducer with cable tie (set)   Ø 92mm
2512106_H003	IKI-LUM_d92 Split-Core Transducer for C-Cone-Bushings (set)   Ø 92mm
2512106_H004	IKI-LUM_d92 Split-Core Transducer for SIEMENS-Bushings (set)   Ø 92mm

### Technical Data

#### General data

Article number	2512106_H004
Quantity unit	Set with 3 pieces



**Kries Energietechnik GmbH & Co. KG**

Sandwiesenstr. 19 | D-71334 Waiblingen

kries.com | sales.kries@te.com | (+)49-7151-7074-860

© Kries Energietechnik GmbH & Co. KG | Subject to modifications.

22.08.24

Page 1/3

# IKI-Split-Core Transducer: IKI-LUM 92 mm

## Directional Split-Core Transducer for SIEMENS-Bushing

### General data

Product designation	IKI-LUM_d92 Split-Core Transducer for SIEMENS-Bushings (set)   Ø 92mm
Usable with	IKI-22, IKI-23, IKI-35, IKI-50, IKI-50_1F R2, IKI-50_1F R2e, IKI-55

### Operating conditions

Protection class	IP54
Applicable at nominal frequency	50 Hz, 60 Hz
Inner diameter	92 mm
Transmission ratio	2000 / 1
Load power	0.2 VA @ 600 A
Thermal maximum current	27 kA
Maximum continuous thermal current	650 A
Insulation voltage transformer	3 kV
Directional current sensing	✓
Installation location	Bushing of SF6-Switchgear

## Connecting Cables

Article number	Product designation
3503118_S	Connecting cable set   pluggable   Length = 3,0m
3503135_S	Connecting cable set   pluggable   Length = 5,0m
3503135_S999	Connecting cable set   pluggable   Lengths on request



**Kries Energietechnik GmbH & Co. KG**

Sandwiesenstr. 19 | D-71334 Waiblingen

kries.com | sales.kries@te.com | (+)49-7151-7074-860

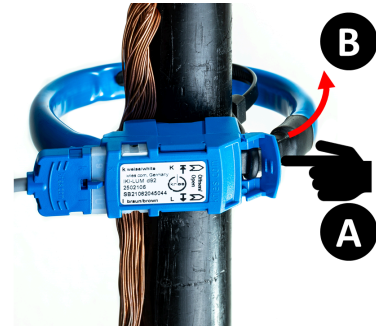
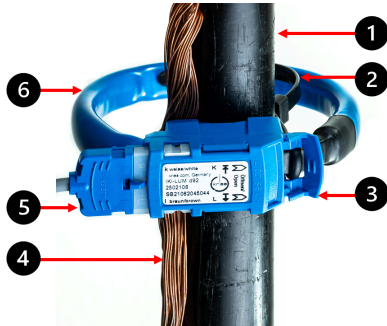
22.08.24

Page 2/3

# IKI-Split-Core Transducer: IKI-LUM 92 mm

Directional Split-Core Transducer for SIEMENS-Bushing

## Figures



### Explanations to the figures:

- (1) Cable
- (2) Cable tie
- (3) Tab to open CTs
- (4) Shield return
- (5) Connector socket for connecting cable
- (6) Divisible CTs core

### Assembly:

- To open transducer core, press tab in marked direction with thumb (A) and pull core out of housing (B). Fasten CTs to cable with cable tie, close transducer core until bead engages tab.
- Orientation: "K (P1)" in direction of busbar, "L (P2)" in direction of cable
- Note shield return through current transformer.

### Safety instructions:

- During installation, the five safety rules must be observed.
- The current transformers may only be placed on shielded, touch-proof cables!
- The current transformers must not be operated in open condition.
- Damaged current transformers must not be used.
- The cable shield must be fed back through the current transformers in an insulated manner for proper function.
- Please refer to the operating instructions of the respective device for further details.

Figures may differ from the product.



**Kries Energietechnik GmbH & Co. KG**

Sandwiesenstr. 19 | D-71334 Waiblingen

kries.com | sales.kries@te.com | (+)49-7151-7074-860

© Kries Energietechnik GmbH & Co. KG | Subject to modifications.

22.08.24

Page 3/3